

Celebrating 15 Years

RENOVATION STYLE[®]

• ULTIMATE •
*Kitchen
Issue*

**Character
Renewed**
*9 Amazing
Kitchen Makeovers*



Summer 2010
Display Until July 27

\$6.99

Volume 16, Number 3



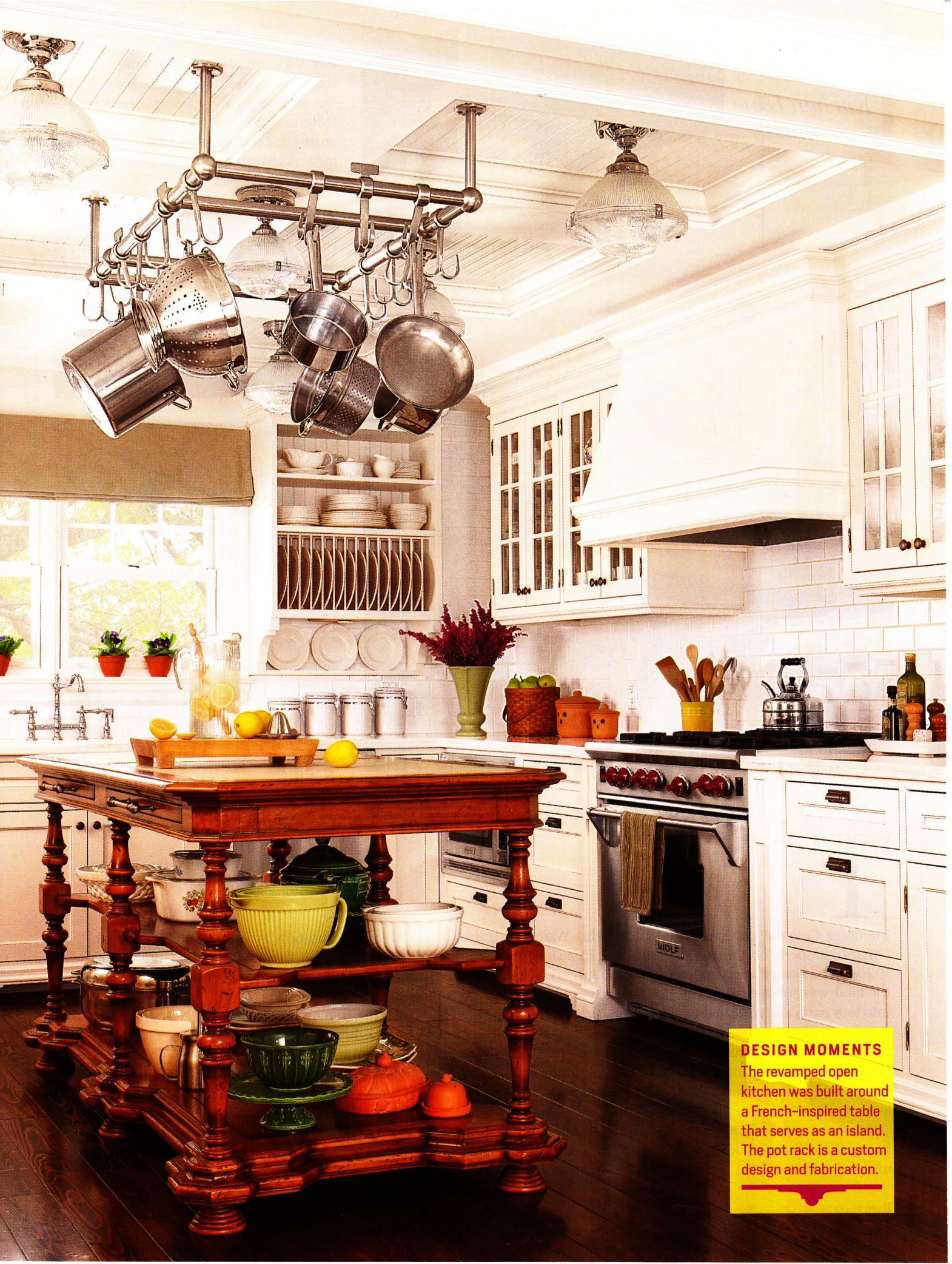
meredithSpecials[®]

Before and After
Inspiring Ideas for Every Room

Open House

A renovation designed for family entertaining takes a vacation cottage from small to smashing.

BY JORGE S. ARANGO PHOTOGRAPHY BY STACEY BRANDFORD PRODUCED BY JACK MURPHY



DESIGN MOMENTS

The revamped open kitchen was built around a French-inspired table that serves as an island. The pot rack is a custom design and fabrication.





LEFT The subway-tile backsplash and marble counters are in keeping with the original 1920s feel, while open shelving and a plate rack make things easy to locate.

BELOW Local cabinetmakers fabricated all the millwork and cabinetry. Antiqued-metal pulls decorate the drawers.



T

The large Colonial that has presided over this Wainfleet, Ontario, property on Canada's side of Lake Erie since the 1920s is still here; it's just undergone radical surgery. When the land was subdivided in the 1940s, the house was cut into four parts and relocated to smaller lots. Additions rendered each piece functional by cobbling on the parts missing after the home's dissection. It was in this form that Mark Narsansky's family purchased one of the resulting structures—with a dreary stained-plywood kitchen addition—as a vacation cottage.

Mark, owner of a Toronto ad agency, and partner Philip Mitchell, a Toronto designer, chose to tear down the unsightly addition and expand the home to serve grown

brothers and sisters who now arrive with many children in tow. "Philip designed it to accommodate large groups of family and friends," Mark says. "The first year we had 26 people for dinner at one time!"

The key to the home's renewed function is openness, especially in the kitchen. "Because we weren't the only ones who were going to prepare meals here," Philip says, "and because we've been through group cooking where you have to tell people where everything is, we made sure that it was all exposed and accessible." Glass-front cabinets, a three-tier open island with a custom pot rack overhead, an old-fashioned plate rack, and open shelving ensure that everything "is at your fingertips," he says.



DESIGN MOMENT

"Freestanding cabinets, hutch, and baseboard details that look like furniture give kitchens an unfitted, historical look," homeowner and designer Philip Mitchell says.



Exceptions are below-counter drawers (which control visual clutter and anchor the room) and cabinetry built around the large refrigerator because, Philip says, “we didn’t want it to be overwhelming, and the cabinet weighs it down so it doesn’t look like it’s in the middle of nowhere.” They considered concealing the appliance behind custom millwork, but the cottage isn’t in an area where repair technicians regularly make house calls, so it had to be easy to remove.

ABOVE LEFT Cabinetry embraces a modern refrigerator so it doesn’t look like an odd addition in a corner of the kitchen. A small gap at the top allows for ventilation and enough room for a shallow basket.

TOP RIGHT Because finding a set of eight antique fixtures was nearly impossible, the homeowners went with new 1920s-style pendants.

ABOVE RIGHT A hardware pull provides access to one of the island’s marble-top pullouts for additional work space.

Kitchen Plans, Before & After

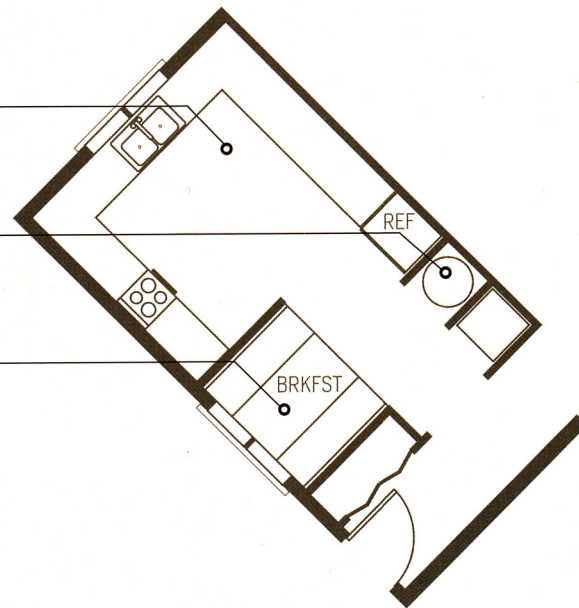
The renovation doubled the kitchen area to 243 square feet. New window placement welcomes ample light to what had been a dark space. Pantries line the entrance hall, tripling storage. “The way it’s set up now,” homeowner and designer Philip Mitchell says, “you come in from shopping and everything immediately goes into the pantries before you even enter the kitchen, which helps keep it tidy at all times.”

BEFORE

The original kitchen was dark, completely enclosed, and cut off from all other rooms.

To the right of the entrance were the unsightly water heater and furnace.

A cramped breakfast nook was located immediately to the left of the kitchen entrance.

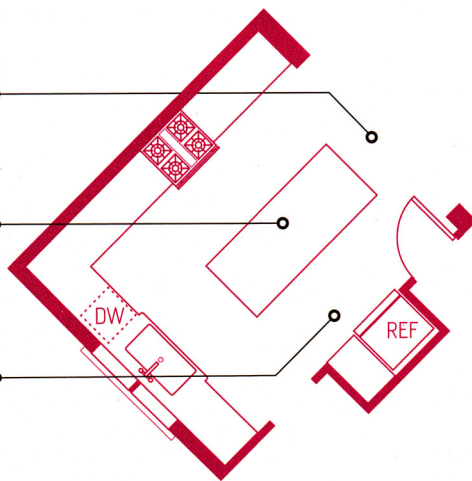


AFTER

The kitchen is now open to the living room and its ample light and lake views.

Widening the kitchen made room for a work island, boosting functionality.

A new wall created room for the refrigerator, storage, and access to the new upper level.



Buying Guide

For a kitchen with many users, go for an accessible and open layout. With glass-front cabinets and an open island, anyone can find cooking supplies. Plenty of surfaces mean multiple cooks can work together.

Antique brass hardware

Lee Valley; 800/267-8735;
leevalley.com

Cabinetry

Wollombi Shopfitters;
905/651-6666;
wollombishopfitters.com

Custom pot rack

Philip Mitchell Design, Inc.;
416/364-0414;
philipmitchelldesign.com

Fabric for blinds

Kravet; 800/645-9068; kravet.com

Faucet

Riobel; 866/473-8442;
selectionriobel.com

Island table

Elte Carpet & Home; 416/785-7885;
elte.com

Kettle and cooking utensils

Williams-Sonoma; 877/812-6235;
williams-sonoma.com

Light fixtures

Restoration Hardware;
800/762-1005;
restorationhardware.com

Marble countertops and porcelain backsplash

Granite Innovations; 905/732-7044;
graniteinnovations.com

Microwave

Panasonic; 800/211-7262;
panasonic.com

Range

Wolf; 800/222-7820;
wolfappliance.com

Refrigerator

GE Appliances; 800/626-2000;
geappliances.com

*The spirit of
openness
permeates the
house.
Light-filled spaces
look over water
and gardens.
Rooms lacking
direct views
have access
to them through
extra-wide
entryways into
rooms with vistas.*





THIS PHOTO A heightened sense of architectural style in the living room comes, in large part, from added crown molding, beaded-board panels, and new windows. Neutral paint colors and window coverings create a platform for the splashes of color in the throw pillows and large painting.

See more photos, go behind the scenes, and post your comments. Search **Renovation Style**.







Work surfaces also expanded when the kitchen doubled to 243-square feet—and not just counters. The French-inspired, marble-top island has pullout surfaces, Mark says, “in case you’re plating meals or need more preparation space.”

Perhaps one of the best improvements made to the home is the raising of the foundation, which affords Philip and Mark a stunning Lake Erie panorama.

Wide entryways help maximize the views and enhance function. There was no way, for example, that 26 people could squeeze into the dining room. But fully extending the six-leaf table through the opening between dining room and den gives everyone a seat for dinner.

Lest the openness feel too vast or devoid of personality, Philip’s floor plan called for a combination of large and small rooms. In the big spaces, he built window seats

and placed furniture to provide intimate gathering areas. Accommodating an extended family that includes children meant also considering durability. “The stone-top coffee table in the living room hides nicks and scratches,” Mark says. “In fact, the more nicks and scratches it gets, the more interesting it looks.”

OPPOSITE Baskets under the coffee table help keep an “ordered chaos,” homeowner Mark Narsansky says.

ABOVE A tray table by a window seat can be used as a coffee table or for serving tea or drinks.

TOP LEFT The rear of the renovated house illustrates how the many windows increase exposure to lake views.

ABOVE LEFT An 8-foot-long antique pine cabinet becomes a display surface for a collection of antique stoneware crocks, which add yet another layer of texture to the room.



BOOKS ON SHELF: STEINBECK, GONE WITH THE WIND, THE TRAVEL BOOK

BOOKS ON SHELF: THE 1920s, GONE WITH THE WIND

BOOKS ON SHELF: THE TRAVEL BOOK, GONE WITH THE WIND

BOOKS ON SHELF: THE TRAVEL BOOK, GONE WITH THE WIND

BOOKS ON SHELF: THE TRAVEL BOOK, GONE WITH THE WIND

BOOKS ON OTTOMAN: THE TRAVEL BOOK, GONE WITH THE WIND

Voice of Experience

Built-in bookcases, window seats, and nooks create intimate spaces in a room and increase its flexibility, homeowner and designer Philip Mitchell says. "A window seat works for reading a book or as conversation area for two," he says. "But you can also pull up chairs and a table and play a board game."



The same idea was behind the barn-board floors. After installation, Philip says, "we went in there with chains, hammers, and screwdrivers and distressed them." Mark points out that they didn't want the house to look brand-new, and distressing the floors added "another layer of depth and character."

Easy-care seagrass and washable wool rugs are used throughout, and furniture is upholstered in durable cotton, linen, or leather. "It's easy to clean," Philip says, adding (only partially in jest), "You just hose it down." Most of the furniture is new or reproduction. But antiques are also in the mix, imparting a sense of age and history. Architectural trims and beaded board also heighten the period feel.

The house gets year-round use, which means nothing should feel too seasonal. One enormous drawback to the patchwork 1940s building, particularly in summer, had been its dark woods and limited windows. "You'd come in from the beach where it was so sunny and beautiful,"

Philip says, "and you couldn't see anything because it was so dark." Yet painting the whole place white might make the Canadian winters feel especially cold, so Philip devised a two-pronged response.

First, wherever he used white, he balanced it with architectural detail or with warm colors and furnishings. In the kitchen, an elaborate arrangement of beams and beaded board overhead not only diminishes what could have been a blizzard of white, but it also brings the high ceiling down to a human scale. The living room's beaded board

OPPOSITE AND ABOVE LEFT An eclectic collection of art, a leather club chair, a deep red carpet, loads of books, and a dark wall color all make the den a warm "winter room." It also serves as a quiet, intimate refuge from the larger spaces.

ABOVE Antique pendants crown a table that extends to seat 26. Underneath, distressed barnwood flooring grounds the space in warmth.



reaches only picture-rail height, above which the walls are painted a soothing sage green (a color that works in all four seasons). Second, in darker rooms, Philip reversed the formula, bringing in lighter furnishings and fabrics. The main-level guest room—what had been the master bedroom—retained its original stained beaded-board walls and ceiling, though windows were added. Solid furniture would have created a heavy, claustrophobic environment, so Philip furnished the room with an open chrome bed flanked by a pair of all-white table lamps.

“We let the old part dictate the aesthetic but lightened it up,” Philip says. A visitor would be hard-pressed to discern the outlines of the old house today—much less imagine

how it fit together with the other parts of the 1920s original that reside on the other lots. It feels, Philip and Mark say, as if it’s always been there.

ABOVE LEFT The beaded board in the main-level guest room (formerly the master) is original. A striped carpet balances the dark wood and echoes its linear quality.

ABOVE RIGHT The master bathroom extends the beaded-board theme and ties in with built-in features around the house.

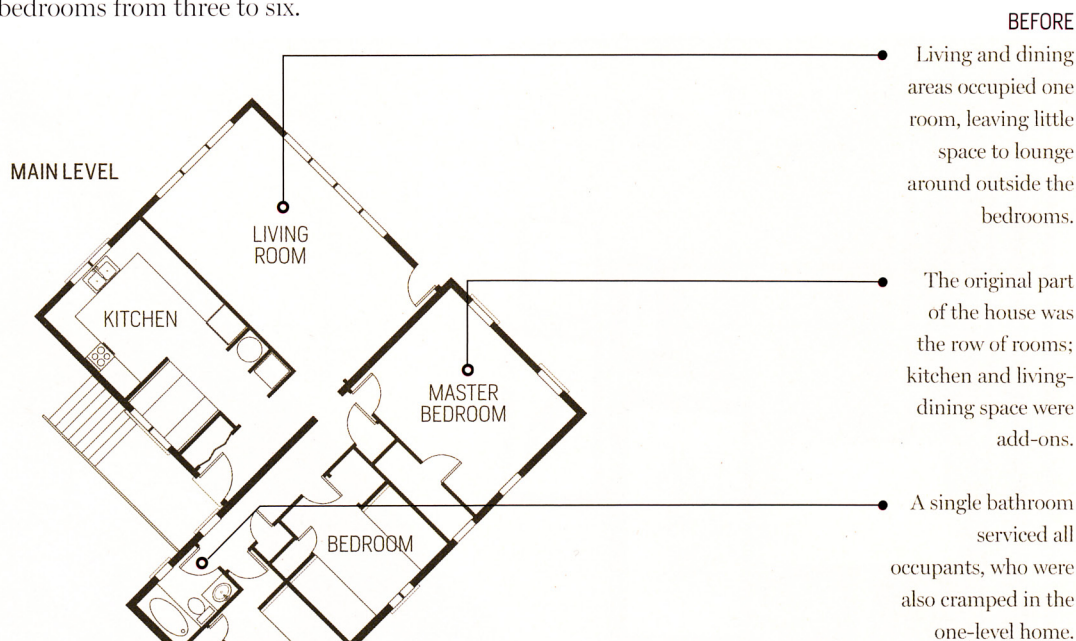
OPPOSITE The master bedroom, on a new upper level, is “a retreat from everybody,” Mark says. A substantial Carpenter Gothic-style bed grounds the bright room.

RESOURCES PAGE 122



The Plans, Before & After

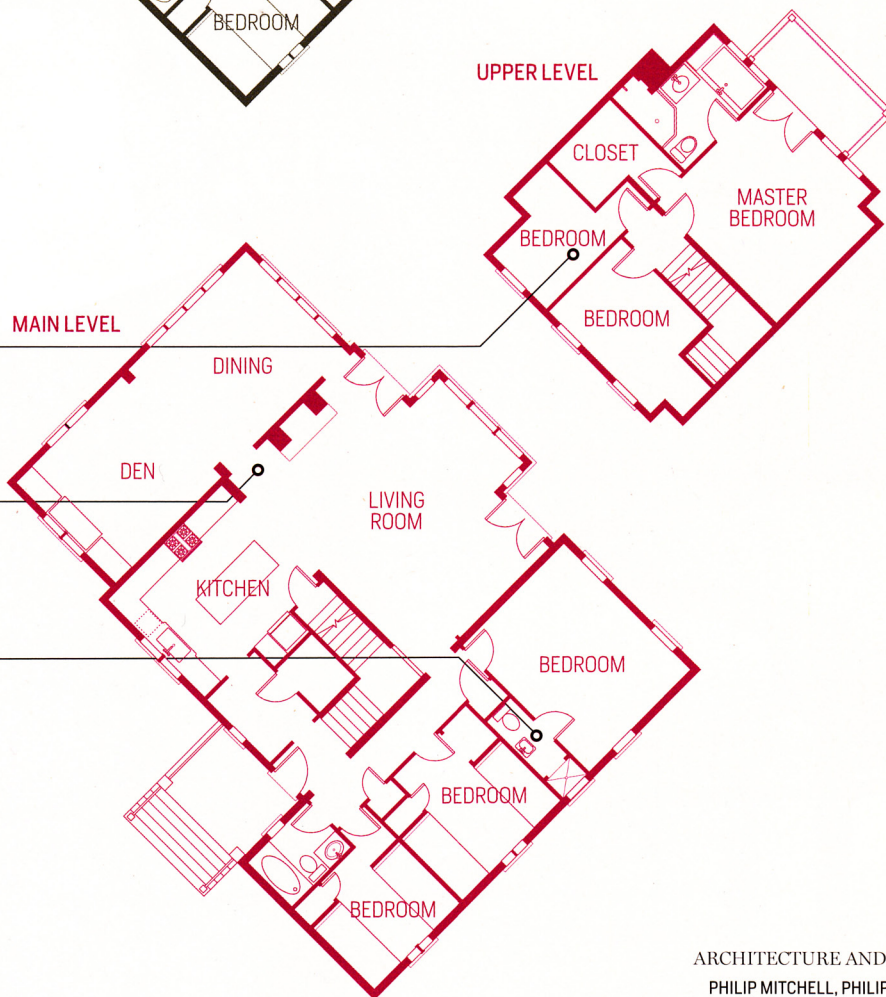
Mark Narsansky and Philip Mitchell retained the original part of the house, with its three sequential bedrooms, but converted the largest into a guest suite. The 1940s addition was torn down, and a two-story structure was added, taking the number of bedrooms from three to six.



AFTER
A new upper level accommodates two guest rooms and a master suite with balcony.

Separate living and dining rooms and a den increase common spaces in which to gather.

The designers carved out a bath from a closet in the old master bedroom, now a guest room.



2,378 square feet

ARCHITECTURE AND INTERIOR DESIGN
PHILIP MITCHELL, PHILIP MITCHELL DESIGN, INC.



Picture-Perfect

When you hang pictures, designer and homeowner Philip Mitchell says: "There are no rules except what looks good and what doesn't. I love putting things together in unconventional ways that people might not think work." Here are some of his techniques:

Mix framing methods. Combine pictures that are conventionally matted with others that sit on top of the mat so you see the rough edge of the paper or canvas (this works well with modern art). Even in a collection, different styles of frames add interest and give the grouping a casual feel. And it has the advantage of flexibility: Each piece can work on its own, or you can move the collection around and mix it with something else.

Create groups. If your pieces have a common theme, hang them close together so they work as one composition.

Try asymmetry. Hanging your pictures symmetrically feels formal, which is fine in that same type of environment. But a little relief is nice. Asymmetry feels as if there's something not quite right about it—in a good way. And it's more intriguing.

Leave empty space. "Sometimes I have walls filled to the brim," Philip says. "But other times I'll have one that's empty except for a single painting or photograph. It depends on the importance of the piece and the architecture of the room."

Treat groups of pictures like a puzzle. If you're hanging a group of pictures, lay everything on the floor or on a bed and mix and match until the arrangement feels exactly right before you put a single nail in the wall.

Buy art you love. "We're passionate collectors, predominantly of North American artists," Philip says. "Your art should reflect your passion."



PAGE 91 (RIGHT)

Dining table—Sita Enterprises, Ltd., Toronto; 905/264-8264; *sedital.com* [T]. **Dining chairs** Windsor—All Most Antiques, Toronto; 416/466-9724. **Fabrics for drapery and chair seats**—Kravet; 800/645-9068; *kravet.com*. **Fabrication of drapery and chair seats**—Drapery International, Toronto; 416/787-9684; *draperyinternational.com* [T]. **Pendant light fixtures with custom shades**—Romela, Toronto; 416/544-1938. **Iron lamps with shades**—Restoration Hardware; 800/910-9836; *restorationhardware.com*. **Framed photography** by Juris Kornets—Natural Selections Photography, Toronto; 647/221-8166; *naturalselections.ca*. **Majolica**—Cynthia Findlay Antiques, Toronto; 416/260-9057.

PAGE 94 (LEFT)

Area rug—Elte; 888/276-3583; *elte.com*. **Bedside tables, armoire**—Patina Antiques, Toronto; 416/862-8880. **Fabric for drapery and bed skirt**—Kravet; 800/645-9068; *kravet.com*. **Ceiling fan**—Wilcorp Ceiling Fans, Toronto; 416/789-1164; *wilcorp.com*. **Fabrication of bed skirt and drapery**—Drapery International, Toronto; 416/787-9684; *draperyinternational.com* [T]. **Porcelain lamps** by Victoria Hagan—Target Stores; 800/800-8800 for a retail store near you; *target.com* (product line varies). **Lampshades**—Romela, Toronto; 416/544-1938. **Accent pillows**—Pottery Barn; 800/922-5507; *potterybarn.com* (product line varies). **Bedding, duvet cover**—The Bay, Toronto; 800/521-2364; *thebay.com*.

PAGE 94 (RIGHT)

Cabinetry and cabinet hardware—Wollombi Shopfitters, Stevensville, Ontario; 905/651-6666; *wollombishopfitters.com*. **Marble countertop, tub deck**—Granite Innovations, Inc., Welland, Ontario; 905/732-7044. **Marble tile**—Ciot, Toronto; 416/785-8080; *ciot.com*. **Faucets for sink and tub**—through Tap's Wholesale Bath Centre, Inc., Toronto; 416/785-0224; *tapsbath.com*. **Light fixtures**—Waterworks; 800/998-2284; *waterworks.com*. **Mirror**—D&E Lake, Ltd. Fine Arts, Toronto; 416/944-2324; *delake.com*.

PAGE 95

Bed frame, end tables, benches—Patina Antiques, Toronto; 416/862-8880. **Arm chair**—All Most Antiques, Toronto; 416/466-9724. **Ceiling fan**—Wilcorp Ceiling Fans, Toronto; 416/789-1164; *wilcorp.com*. **Table lamps**—Target Stores; 800/800-8800 for a retail store near you; *target.com* (product line varies). **Floor lamp, all shades custom**—Romela, Toronto; 416/544-1938. **Fabrics for chair, drapery, and pillow shams**—Tessuti Uno, Ltd., Toronto; 416/922-0126 [T]. **Fabrication of drapery and shams**—Drapery International, Toronto; 416/787-9684; *draperyinternational.com* [T]. **Upholstery of chair and bench**—N'Shape Designs, Toronto; 416/742-7323; *abanaupholstery.com*. **Framed antique bird prints**—D&E Lake, Ltd. Fine Arts, Toronto; 416/944-2324; *delake.com*. **Bedding, duvet cover**—Au Lit Fine Linens, Toronto; 416/489-7010; *aulitfinelinens.com*.

Expanded with Imagination**PAGES 98-109**

Architect: Jeffrey Spoelker, AIA, formerly with Lyman Perry Architects, Nantucket; now with JMS Architecture, LLC, P.O. Box 791, Ardmore, PA 19003 215/200-3269; *jmsarchitecture.com*; e-mail: jeff@jmsarchitecture.com. **Builder**: Bob Lazzari, Conant Construction, Inc., 19 Erie Dr., Natick, MA 01760; 508/651-0585; *conantconstruction.com*.

THROUGHOUT

Flooring wide old-growth pine, **beams** weathered oak, **stair treads**—Carlisle Wide Plank Flooring, 800/595-9663; *wideplankflooring.com*.

PAGES 98, 103 (TOP)

Fireplace stonework—Michael Craddock, Stone Mason, Nantucket; 508/280-4853; *nantucketstonemason.com*. **Sofa, chairs**—Lee Industries; 800/892-7150; *leeindustries.com*. **Trunk for coffee table** pine blanket chest—Prospect Hill Antiques, Georges Mills, New Hampshire; 603/763-9676; *prospecthillantiques.com*. **Painting on easel** *All That* by Sherre Wilson Rae—represented by South Wharf Gallery,

Nantucket; 508/228-0406; *southwharfgallery.com*. **Ship artwork over mantel** *Royal Navy Frigate* created by sailor, circa 1830—Land And Sea Collection; *landandseacollection.com*. **Brass signal lamps**—Val Maitino Antiques, Nantucket; 508/228-2747.

PAGE 99

Landscape construction and exterior stonework—Michael Craddock, Stone Mason, Nantucket, Massachusetts; 508/280-4853; *nantucketstonemason.com*. **Trim paint** *Stormy Sky*—Benjamin Moore; 888/236-6667; *benjaminmoore.com* [P]. **Window, doors**—Marvin Windows and Doors; 888/537-8268; *marvin.com*.

PAGE 101

Floor tile *China Lotus*—Tile Showcase, Watertown, Massachusetts; 617/926-1100.

PAGE 102

Dining table antique pine—Walker Creek, Essex, Massachusetts; 978/768-7622. **Chairs**—D.R. Dimes & Co., Ltd., Northwood, New Hampshire; 603/942-7409; *drdimes.com*. **Lamps on table**—Pottery Barn; 800/922-5507; *potterybarn.com* (product line varies).

PAGES 106-107

Cabinetry custom—Scandia Kitchens, Inc., Bellingham, Massachusetts; 508/966-0300; *scandiakitchens.com*. **Cabinet paint** *Vanilla Milkshake*, **island paint** *Garden Oasis*—Benjamin Moore; 888/236-6667; *benjaminmoore.com* [P]. **Marble island counter, granite perimeter counters**—Stone Passions, Bellingham, Massachusetts; 508/966-2772. **Hanging light fixtures**—Rejuvenation; 888/401-1900; *rejuvenation.com*. **Range hood**—Best By Broan; in the United States: 800/558-1711; in Canada: 877/896-1119; *bestbybroan.com*. **Refrigerator, cooktop**—Sub-Zero/Wolf; 800/222-7820; *subzero.com*. **Sink faucet**—Perrin & Rowe, presented by Rohl; 800/777-9762; *rohlhome.com*. **Fabric for window seat** *Pembroke Cascade*—Rogers & Goffigon, Ltd., Greenwich, Connecticut; 203/532-8068 [T]. **Breakfast table**—Walker Creek Furniture, Essex, Massachusetts; 978/768-7622. **Chairs**—Pottery Barn;

America Co.; 800/423-3531; *hafele.com/us*. **Countertops** honed venantino marble—Capital Granite & Marble, Inc.; 888/472-6483; *capitalgranite.com*. **Island** custom maple—Butcher Block Furniture, Inc., Minneapolis; 612/333-3713. **Range** #R304—Wolf Appliance Co., LLC; 800/332-9513; *wolfappliance.com*. **Hood** #PRH9-130-SS—Vent-A-Hood Co.; 800/331-2492; *ventahood.com*. **Refrigerator** #JFC2089PHPF Floating Glass Bottom Mount in white—Jenn-Air; 800/688-1100; *jennair.com*. **Microwave oven**—Electrolux Home Products; 800/374-4432; *frigidaire.com*. **Sink** #3715—Julien, Inc.; 800/461-3377; *julien.ca*. **Faucet** LadyLux Pro—Grohe America, Inc.; 800/201-3407; *groheamerica.com*. **Pendant lighting** Rocks—LBL Lighting; 800/323-3226; *lballighting.com*. **Counter stools** Sebastian—IKEA; in the United States: 877/345-4532; in Canada: 888/932-4532; *ikea.com*. **Mixer** Classic—KitchenAid; *kitchenaid.com*. **Toaster**—Cuisinart; 800/726-0190; *cuisinart.com*. **White plastic tray**—Target Stores; 800/800-8800 for a retail store near you; *target.com* (product line varies). **Dishwasher** #D3232XIPI—Asko Appliances; 800/367-2444; *askousa.com*.

Counter Culture

PAGES 70-75

Granite, marble, soapstone, and slate samples courtesy of Rowat Cut Stone & Marble Co., Des Moines; 515/244-8604; *rowatcutstoneandmarble.com*.

Retro Fit

PAGES 76-81

Architect: Jean Rehkamp-Larson, AIA, Rehkamp-Larson Architects, Inc., 2732 W. 43rd St., Minneapolis, MN 55410; 612/285-7275; *rehkamplarson.com*.

Builder: Stephan Boda and Don Bielinski, Artisan Renovation, Inc., Minneapolis; 612/819-4333; *artisanrenovationinc.com*; e-mail: stephan@artisanrenovationinc.com.

Cabinetry custom—Eastvold Custom Woodworks, Dennison, Minnesota; 651/210-2294; *eastvoldcustom.com*.

Perimeter countertops Lagos Blue—CaesarStone US; 877/987-2789; *caesarstoneus.com*. **Wall tile** Lansdale carrara in Rush River finish—Tile Shop; 888/398-6595; *tileshop.com*. **Sink** Gilford #K-12700—Kohler Co.; 800/456-4537; *kohler.com*.

Faucet #A1456XM—Rohl; 800/777-9762; *rohlhome.com*. **Refrigerator** NorthStar,

dishwasher—Elmira Stove Works; 800/295-8498; *elmirastoveworks.com*.

Range vintage Roper—homeowners' collection. **Hood** custom, brushed steel—Discount Steel, Minneapolis; 612/522-5956. **Lighting over island** Randolph Pendant—Hudson Valley Lighting, Inc.; 800/814-3993; *hudsonvalleylighting.com*. **Light fixture over sink** vintage—reworked by Lightworks, Minneapolis; 612/724-8311; *lightworkslighting.com*.

Open House

PAGES 82-97

Architect: Drew Laszlo, Drew Laszlo Architects, 3300 Yonge St., Suite 200-A, Toronto, ON M4N 2L6; 416/781-5800; *dlarchitect.ca*.

Interior designer: Philip Mitchell, Philip Mitchell Design, Inc., 160 Pears Ave., Suite 302, Toronto, ON M5R 3P8; 416/364-0414; *philipmitchelldesign.com*.

Contractors: Ray and Jeff Ybema, Portico Construction, 599 Geneva St., St. Catharines, ON L2N 2J3; 905/658-4441.

PAGES 82-86

Cabinetry, cabinet hardware—Wollombi Shopfitters, Stevensville, Ontario; 905/651-6666; *wollombishopfitters.com*.

Marble countertops, porcelain backsplash tiles—Granite Innovations, Inc., Welland, Ontario; 905/732-7044. **Faucets, sinks**—through Tap's Wholesale Bath Centre, Inc., Toronto; 416/785-0224; *tapsbath.com*.

Island—Elte; 888/276-3583; *elte.com*. **Pot rack** custom—Philip Mitchell Design, Inc., Toronto; 416/364-0414; *philipmitchelldesign.com*. **Range**—Wolf Appliance Co., LLC; 800/332-9513; *wolfappliance.com*.

Microwave oven—Panasonic USA; 800/211-7262; *panasonic.com*. **Fabric for Roman shade**—Kravet; 800/645-9068; *kravet.com*.

Light fixtures, green vase—Restoration Hardware; 800/910-9836; *restorationhardware.com*. **Stainless-steel cookware**—Lagostina; *lagostinausa.com*.

Canisters—The Bay, Toronto; 800/521-2364; *thebay.com*. **Kettle, cooking utensils, stainless-steel juicer**—Williams-Sonoma; 800/541-2233; *williams-sonoma.com*.

Cream dishes—William Ashley, Toronto; 416/964-2900; *williamashley.com*.

Refrigerator—GE Appliances; 800/626-2000; *geappliances.com*. **Door hardware** Summerhill Hardware—through Elte; Toronto; 416/787-1788; *elte.com*.

PAGES 87-89

Sofa, seagrass rug—Elte; 888/276-3583;

elte.com. **Iron-and-wood coffee table, window seat cushions, glass lamps, upholstered chairs**—through Philip Mitchell Design Furniture, Toronto; 416/364-0414; *philipmitchelldesign.com* [T]. **Fabric for window seat cushions**—Tessuti Uno, Ltd., Toronto; 416/922-0126 [T]. **Fabric for upholstered chairs**—Brunschwig & Fils; 800/538-1880; *brunschwig.com* [T]. **Antique bamboo armchairs**—All Most Antiques, Toronto; 416/466-9724. **Fabrics for drapery and upholstered chairs, leather for bamboo chair**—Kravet; 800/645-9068; *kravet.com*.

Fabrication of draperies and Roman shades—Drapery International, Toronto; 416/787-9684; *draperyinternational.com* [T].

Fabrication of window seats, ottoman upholstering—N'Shape Designs, Toronto; 416/742-7323; *abanaupholstery.com*.

Ottomans—Patina Antiques, Toronto; 416/862-8880. **Faux leather for ottomans**—Brentano, Inc.; Northbrook, Illinois; 847/657-8481; *brentanofabrics.com*. **Accent pillows**—Pottery Barn; 800/922-5507; *potterybarn.com* (product line varies).

Framed artwork by Mark Narsansky—through Philip Mitchell Design, Inc., Toronto; 416/364-0414; *philipmitchelldesign.com*. **Coffee table at window seat**—Nestings, Toronto; 416/932-3704. **White porcelain vase, model sailboat**—Restoration Hardware; 800/910-9836; *restorationhardware.com*. **Antique pine cabinet**—Horsefeathers Antiques, Toronto; 416/486-4555; *horsefeathershome.com*. **Slow cookers**—Blue Shutters Antiques, Chester, Nova Scotia; 902/274-5359.

PAGES 90-91 (LEFT)

Sofa, games table, Persian area rug—Elte; 888/276-3583; *elte.com*. **Fabrics and trims for Roman shade, window seat cushions, and accent pillows**—Kravet; 800/645-9068; *kravet.com*. **Fabrication of Roman shades and accent pillows**—Drapery International, Toronto; 416/787-9684; *draperyinternational.com* [T]. **Fabrication of window seat cushions**—N'Shape Designs, Toronto; 416/742-7323; *abanaupholstery.com*. **Bronze lamp**—Target Stores; 800/800-8800 for a retail store near you; *target.com* (product line varies). **Custom lampshades**—Romela, Toronto; 416/544-1938. **Antique marble-top chest**—507 Antiques, Toronto; 416/466-5677; *fiveoseven.com*. **Bamboo lamp**—Porta Romana; *portaromana.co.uk*. **Framed photography of fall trees Bathed in Gold**—Steven Crainford, Steven Crainford Photography, Toronto; 416/701-9292; *stevencrainford.com*.