

Beautiful Homes

Exquisite Details!

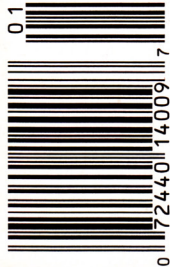
The Secret to Elegant Rooms



Spring 2010
Volume 6, No. 1

Display until July 6

\$8.99



RemodelingCenter.com/bh

Photo: Jill Tenover/OliverBond

Beautiful Homes™ Sweet Style

Authentic Italian p. 20 | Perfect Fit p. 34
French Vintage p. 48 | Safe Harbor p. 60
Manor Reborn p. 72 | Classic Informality p. 86







TO CREATE A
HOME WITH
EUROPEAN STYLE AND
MODERN COMFORT,
CLEAN CLASSICISM
BECOMES THE MOTTO.

Authentic Italian

Writer **Erin Crawford** Photographer **Stacey Brandford**



PERFECT ENTRANCE

The foyer, *left*, is flooded with diffused light thanks to a skylight covered with a semitranslucent lens. A mix of marble and granite laid on the floor in a slightly modified formal French pattern gives the entrance a contemporary feel.

AUTHENTIC EUROPEAN

An antique marble mantelpiece, *opposite*, brings old-world style to the living room but maintains the home's clean lines.

GENTLEMAN'S RETREAT

Homeowner Guido Doria's company crafted the millwork for the library, *below*. Aiming for a true European feel, the team chose a dark finish with gold leaf highlights.

T

This home's sweeping stone stairway says it all. The breathtaking curve of freestanding stairs is constructed from slabs of crema marfil marble—exactly the sort of material that would be used in an Italian home. When Guido and Betty Doria built the Toronto-area house, they chose materials Guido's father would have used constructing homes in his native Italy.

When the Dorias set out to build their dream home, Guido, who owns a cabinet manufacturing business and often works on custom kitchen projects, desired the classic European details he'd grown up with. The couple turned to designer Philip Mitchell to import beautiful detail and character into the home.

Other than the basic footprint in place when Mitchell came to the project, he designed the whole house, from



OLD & NEW

A mix of classical prints and etchings paired with contemporary photographs mirrors the living room's blend of historical and modern.







REFINED COMFORT

INTERIOR DESIGNER PHILIP MITCHELL'S SKILL WITH CLASSICAL DESIGN WAS A PERFECT FIT FOR HIS CLIENTS.

Q How did you pursue a European look without creating too much formality or fussiness?

A The house is more of a formal house, but we wanted to fool with the finishes and detailing. You see that in the kitchen, where the triple-stepped edge detail on the counters and the island give the room interest and make it less serious.

Q How did the home's color palette support the design?

A Overall, we used a wheaty-golden tone. We chose subtle, soft colors, such as a little soft lavender and yellow here and there. Even though they're not bright hues, it all builds and works together.

Q Having created a clean, classical home, how did you keep the decor beautiful but not too formal?

A We wanted to give the home a nice, comfortable feel, not overwhelmingly ornate in any way. We like the interplay of individual high-end pieces, such as a beautiful Baccarat light and crystal lamps, paired with porcelain from IKEA and a Ming vase. It doesn't result in a stiff appearance.



molding to furnishings. "Because we were doing the entire house, we had the flexibility to approach every room as corresponding to each other," Mitchell says. "So even though the house feels built over years, it was done all in one step."

"The interior of the house was taken from scratch and detailed—the panel molding, the arches, the skylight detail," Guido says. "Everything, including the furniture, we had custom-made. The house is classic and comfortable, and there's a tremendous elegance, but it doesn't say 'don't touch.'"

The kitchen, breakfast room, and family room make up the main living space. Guido took a strong hand in the kitchen design, choosing flourishes and finishes he'd never

DINING IN LUXURY To emphasize the height and formality of the dining room, *opposite*, beautiful plaster moldings with soft profiles were applied to the space, wrapping it in subtle pattern.

KITCHEN TRADITION To finish his artful cabinetry, *above*, Guido decided on white paint for its classic appeal. Leaded-glass details add another timeless touch.



SMALL GATHERINGS

The breakfast room, *left*, designed as an atrium, captures a beautiful view and plenty of natural light. For small gatherings, the room is perfect for entertaining. "The room doubles as a less formal dining room," designer Philip Mitchell says.

SURPRISING STYLE Extra layers of curves on the countertop edges, *opposite*, create a unique profile. Carved brackets and panels emphasize the custom feel of the kitchen. The carved-wood range hood is also one-of-a-kind.

used before: new profiles on the classic framed cabinets; extra counter depth, paneling, and trim; and a coffered ceiling built up with an intricate series of panels. "I'm in the kitchen business, so it was essential for me to create a kitchen that was the culmination of our ideas," Guido says. "I wanted something that wasn't going to date."

Everywhere in the kitchen, bold dimensions make a statement. Thicker-than-usual cabinet doors create a dramatic backdrop. The island impresses with its size and two tiers with separate areas for work and casual dining.

Mitchell balanced the bold island and masculine square stools with a pretty vine detail on the wooden

range hood and leaded-glass accents on cabinets. The crisp white-painted cabinetry, Belgian black and statuario marble counters, mahogany wood, and walnut and burl veneers stay consistent with the home's palette of sophisticated neutrals.

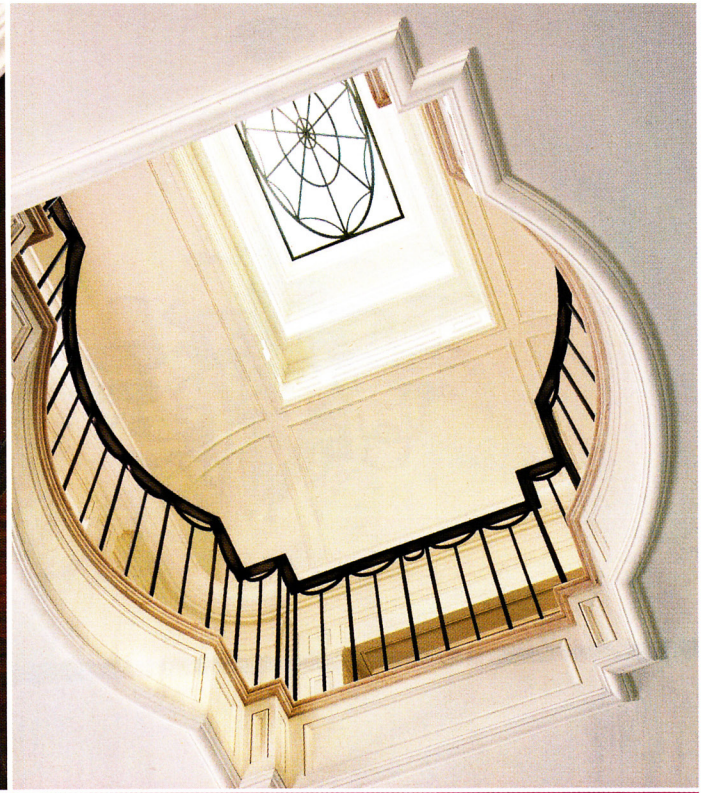
An atrium adjacent to the kitchen makes for a bright breakfast room and relaxing space for small dinner parties, but for large family gatherings, the dining room is beautifully formal, framed by stately archways and columns. Venetian plaster embellished with an embroidered damask pattern lends the dining room a softer feel than other areas of the house, where paneling is often utilized. "We wanted to

**LUMINOUS
DESIGN**

A unique forged-iron fixture with a parchment shade perfectly embodies the kitchen's fresh take on the classics.







In the Details

The level of detail in the house is so great, it's hard to see every detail, designer Philip Mitchell says.

Here, the richness of the levels and steppings of every element are plainly in view.

BALUSTRADE A hand-forged iron balustrade, *opposite*, wears a simple scallop motif. **COLUMN** Marble lends a softness to a stately column, *above left*, which separates spaces. **SKYLIGHT** In the rotunda, *above right*, a skylight is covered with a semitranslucent lens to provide soft light and hide the bones of the window. **CROWN MOLDING** The hallmark of the home's millwork, *below left*, is clean, restrained lines and panels, layered for a deep, individual look. **FLOOR** A mix of marble and granite, *below right*, is used in the formal rotunda.



Love this master suite's distinctive style and rich molding? Find more ideas at RemodelingCenter.com to make your home just as beautiful and unique.





emphasize the height in the space and the formality as well, so rather than a dropped bulkhead and beams, we applied beautiful plaster moldings with soft profiles, wrapping the space in soft pattern," Mitchell says.

Elsewhere, Guido trusted Mitchell's instincts, even when the designer suggested unconventional choices, such as midnight blue interior doors. "After we painted the doors white, Philip said, 'Let's change the color of the doors,'" Guido says. "I thought it would be kind of odd and not formal enough, but we tried one door and I fell in love with it. The door transformed the space entirely and introduced an elegant dark color."

SERENE SLUMBERS The master bedroom, *above*, connects to an independent sitting room with a shared fireplace. Generous windows keep the space bright.

PURPOSEFUL DESIGN In the calming master suite sitting room, *opposite*, art hangs over the two-sided fireplace; in the comfortable bedroom area (not shown), a TV owns a similar spot.

DRAWING ON ARCHITECTURE The vanity design, *left*, was inspired by small Gothic arches in the cornice molding. Antique sconces flank the mirror.



SIMPLICITY RULES Mitchell wanted the exterior design, *left*, to be restrained and simple rather than ornate. Simple columns, panels, and layered moldings are a true insight to the home's overall design. A Palladian window in the master suite adds a crowning European flourish. **IRON ADORNED** Although relatively simple in design, decorative window grilles and curving brackets, *below*, bestow individuality to the home's facade. Layers of clean-lined molding add a sophisticated finish.

Light creates its own transformation in the master suite, where a large Palladian window provides design focus. Two large archways and a shared fireplace connect the separate sitting area and bedroom.

Several elements in the master bathroom were millwork-inspired, testifying to the home's details. The vanity, crafted by Guido's company, mimics Gothic arches in the cornice molding, as does a diagonal floor detail.

Going into so many homes for his business, Guido says, "I've seen it all. I now realize how complicated it is to achieve that perfect balance."

Interior designer **Philip Mitchell** Architectural designer **Ruben Benchitrit**

RESOURCES ON PAGE 98



European refinement, contemporary feel

To capture the ambience of a traditional Italian home, the homeowners and designer used timeless materials and refined millwork to create beautiful, light-filled spaces.

Sensational stairs

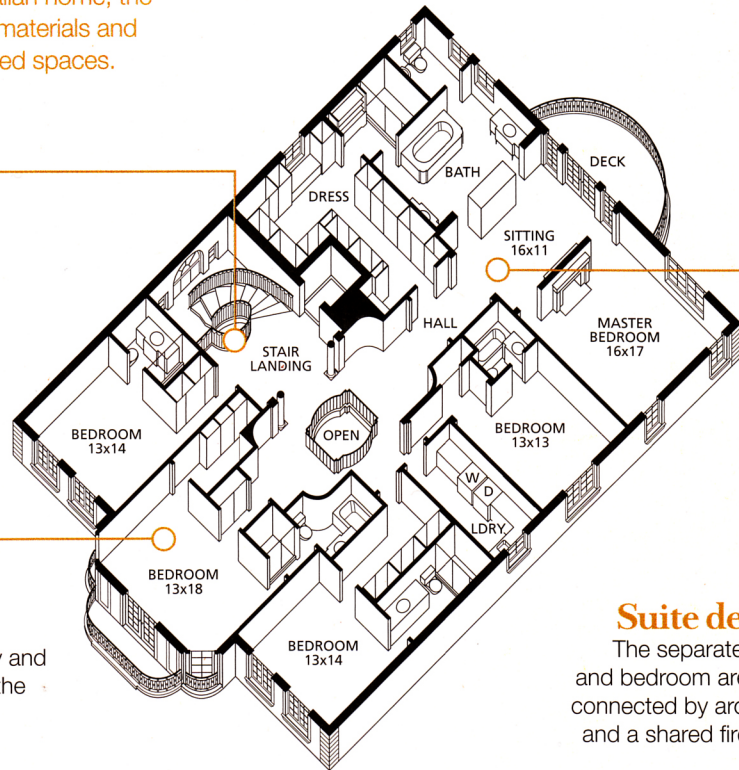
Steel reinforces the floating marble stairway, a heavy showpiece that looks elegant and light.

Family space

The sizable upper level provides plentiful family and guest space opposite the master suite.

Suite design

The separate sitting and bedroom areas are connected by archways and a shared fireplace.

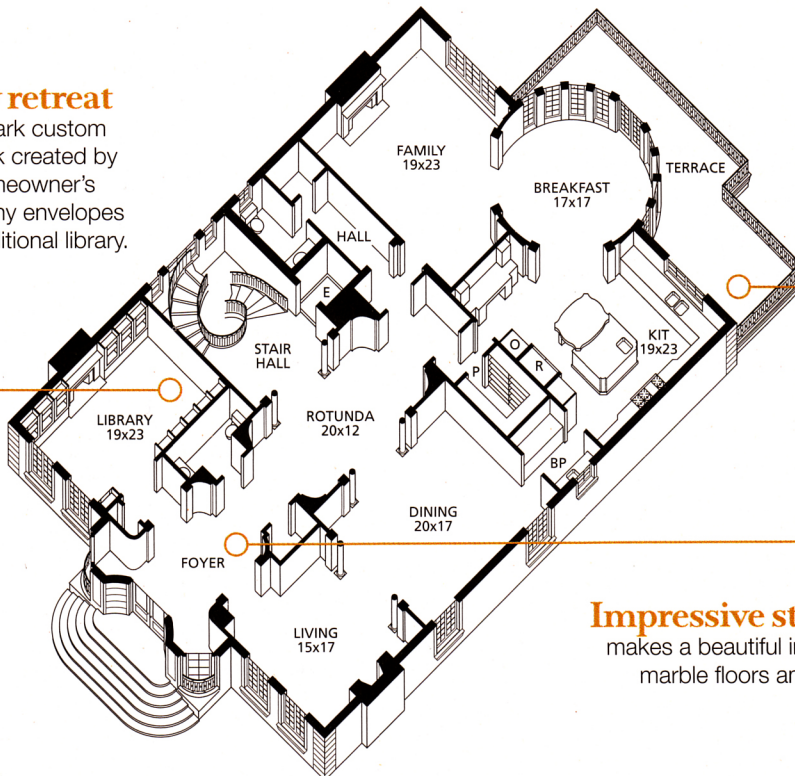


UPPER LEVEL
3,046 sq. ft.

Cozy retreat

Rich, dark custom millwork created by the homeowner's company envelops the traditional library.

Bright spot Designed as an atrium, the breakfast room captures maximum sunlight thanks to a curved bank of windows.



MAIN LEVEL
3,166 sq. ft.

Impressive start The foyer makes a beautiful impression with marble floors and a glamorous skylight above.

Resources

FOR MORE INFORMATION ABOUT THE STORIES IN THIS ISSUE, CONTACT THE PROFESSIONALS AND SOURCES LISTED HERE. ADDRESSES AND PHONE NUMBERS HAVE BEEN VERIFIED, BUT WE CANNOT GUARANTEE THE AVAILABILITY OF ITEMS OR SERVICES.

Authentic Italian

Pages 20–33

Architectural designer: *Ruben Benchtir, Ruben & Associates Architects/Design Build, 4 Goldfinch Ct., North York, Ontario, M2R-2C3 Canada; 416/635-9545.*

Interior architecture designer and decorator: *Philip Mitchell, Philip Mitchell Design, Inc., 160 Pears Ave., Suite 302, Toronto, Ontario, M5R 3P8, Canada; 416/364-0414; philipmitchelldesign.com.*

Page 21

Antique crystal chandelier—Romela Antique Lighting, Toronto; 416/544-1938; *romelaantiquelighting.com.*

Page 22 (top)

Marble flooring—Ciot, Toronto; 416/739-8000; *ciot.com.* **Table**—Patina Antiques, Toronto; 416/862-8880. **Stools**—Philip Mitchell Design Furniture, Toronto; 416/364-0414; *philipmitchelldesign.com* [T].

Wall sconces—Primavera Interior Furnishings, Ltd., Toronto; 416/921-3334; *www.primavera.ca* [T].

KEY

[T] **To the Trade.** These items or services are not available to the general public. Contact a design professional for help.

[P] **Paint Color.** Because of the magazine printing process, paint colors depicted on our pages may vary slightly from manufacturers' colors. Use paint color names or numbers, when given, as a starting point. To get the exact color you see in the magazine, take the page to a paint retailer for matching.

Page 22 (bottom)

Paneling—Bellini Custom Cabinetry, Toronto; 416/787-4799; *bellini.ca.*

Sofa—Philip Mitchell Design Furniture, Toronto; 416/364-0414;

philipmitchelldesign.com [T]. **Sofa fabric**—Primavera Interior Furnishings, Ltd., Toronto; 416/921-3334; *www.primavera.ca* [T]. **Sofa trim, chair fabric, drapery fabric, trim, fabrics for accent pillows**—Kravet; 800/645-9068; *kravet.com.* **Chairs, coffee table**—Patina Antiques, Toronto; 416/862-8880. **Fabric for sheers**—Brunschwig & Fils; 800/538-1880; *brunschwig.com* [T].

Area rug—Elte Carpet & Home, Toronto; 416/785-7885; *elte.com.* **Antique Bouliot lamp, custom lampshade**—Romela Antique Lighting, Toronto; 416/544-1938; *romelaantiquelighting.com.*

Page 23

Sofa at right, chaise longue at left—Philip Mitchell Design Furniture, Toronto; 416/364-0414; *philipmitchelldesign.com* [T]. **Antique marble-top end table**—507 Antiques, Toronto; 416/466-5677; *fiveoseven.com.*

Antique chairs and end tables—Patina Antiques, Toronto; 416/862-8880. **Sofa fabric**—Lee Jofa; 800/453-3563; *leejofa.com* [T]. **Sofa trim, fabrics and trim for accent pillows, fabric for chairs**—Kravet; 800/645-9068; *kravet.com.* **Fabrics for chaise longue and accent pillows**—Primavera Interior Furnishings, Ltd., Toronto; 416/921-3334; *www.primavera.ca* [T]. **Fabric for chaise longue bolsters and draperies**—Tessuti Uno, Ltd., Toronto; 416/922-0126 [T]. **Coffee table**—Beacon Hill; 800/333-3777; *beaconhilldesign.com* [T]. **Fabric for sheers**—Brunschwig & Fils; 800/538-1880; *brunschwig.com* [T]. **Area rug**—Elte Carpet & Home, Toronto;

416/785-7885; *elte.com.* **Rock crystal lamp, antique Baccarat crystal lamp, custom shades**—Romela Antique Lighting, Toronto; 416/544-1938; *romelaantiquelighting.com.*

Page 24

Antique breakfront—507 Antiques, Toronto; 416/466-5677; *fiveoseven.com.* **Dining chairs, fabric for seat cushions**—Kravet; 800/645-9068; *kravet.com.* **Fabric for dining chair back**—Pierre Frey, through Primavera Interior Furnishings, Ltd., Toronto; 416/921-3334; *www.primavera.ca* [T].

Antique dining table—Patina Antiques, Toronto; 416/862-8880. **Antique Italian crystal chandelier**—Romela Antique Lighting, Toronto; 416/544-1938; *romelaantiquelighting.com.* **Area rug**—Y & Co. Carpet & Textiles, Toronto; 416/968-7700; *ycocarpet.com* [T]. **Drapery fabric**—GP&J Baker, through Kravet; 800/645-9068; *kravet.com* [T].

Pages 25–27

Cabinetry—Bellini Custom Cabinetry, Toronto; 416/787-4799; *bellini.ca.*

Cabinetry hardware—Summerhill Hardware, Toronto; 416/787-1788; *elte.com.*

Marble floor, countertops, backsplash field tile and mosaics—Ciot, Toronto; 416/739-8000; *ciot.com.* **Faucets, sinks**—Ginger's International Bath Centre, Toronto; 416/787-1787; *elte.com/gingers/.*

Refrigerator, freezer, wine cooler, range, microwave oven, warming drawer—Sub Zero/Wolf; 800/222-7820; *subzero.com.*

Dishwashers integrated with cabinetry—Miele, Inc.; 800/463-0260; *miele.com.* **Fabric for blind, chair seats, and draperies**—Kravet; 800/645-9068; *kravet.com.* **Light fixture at island**—John Rosselli & Associates; 212/593-2060; *johnrosselliassociates.com.* **Dining**

table—Elte Carpet & Home, Toronto; 416/785-7885; *elte.com*. Dining chairs—Philip Mitchell Design Furniture, Toronto; 416/364-0414; *philipmitchelldesign.com* [T]. Antique alabaster light fixture—Romela Antique Lighting, Toronto; 416/544-1938; *romelaantiquelighting.com*.

Page 30

Settee—Patina Antiques, Toronto; 416/862-8880. Fabrics for settee and chairs—Brunschwig & Fils; 800/538-1880; *brunschwig.com* [T]. Chairs—Philip Mitchell Design Furniture, Toronto; 416/364-0414; *philipmitchelldesign.com* [T]. Coffee table—Kravet; 800/645-9068; *kravet.com*. Antique marble-top end tables—507 Antiques, Toronto; 416/466-5677; *fiveoseven.com*. Crystal lamps—Brunschwig & Fils; 800/538-1880; *brunschwig.com* [T]. Custom lampshades—Romela Antique Lighting, Toronto; 416/544-1938; *romelaantiquelighting.com*. Area rug—Elte Carpet & Home, Toronto; 416/785-7885; *elte.com*. Drapery fabric—Telio & Cie; 416/968-2020; *telio.com* [T]. Antique brass boxes, antique porcelain—W.R. Antiques, Toronto; 416/504-6900.

Page 31 (top)

Headboard—Philip Mitchell Design Furniture, Toronto; 416/364-0414; *philipmitchelldesign.com* [T]. Headboard fabric—Tessuti Uno, Ltd., Toronto; 416/922-0126 [T]. Headboard trim—Brunschwig & Fils; 800/538-1880; *brunschwig.com* [T]. Bedside tables—Bellini Custom Cabinetry, Toronto; 416/787-4799; *bellini.ca*. Cushion fabric, fabric for trim and bed skirt—Kravet; 800/645-9068; *kravet.com*. Fabric for drapery and Euro shams—Telio & Cie; 416/968-2020; *telio.com* [T]. Queen shams—Beacon Hill; 800/333-3777; *beaconhilldesign.com* [T]. Coverlet—Elte Carpet & Home, Toronto; 416/785-7885; *elte.com*. Antique alabaster lamps, custom shades—Romela Antique Lighting, Toronto; 416/544-1938; *romelaantiquelighting.com*.

Page 31 (bottom)

Cabinetry, mirrored medicine cabinet—Bellini Custom Cabinetry, Toronto; 416/787-4799; *bellini.ca*. Cabinet hardware—Summerhill Hardware, Toronto;

416/787-1788; *elte.com*. Marble floor and countertops—Ciot, Toronto; 416/739-8000; *ciot.com*. Faucet, towel ring, accessories—Ginger's International Bath Centre, Toronto; 416/787-1787; *elte.com*. Antique wall sconces—Romela Antique Lighting, Toronto; 416/544-1938; *romelaantiquelighting.com*.

Perfect Fit

Pages 34–47

Architect: Jeff Goulette, Sullivan, Goulette, & Wilson Architects, Ltd., 350 W. Hubbard St., Suite 350, Chicago, IL 60654; 312/988-7412, ext. 203; *sgwarch.com*.

Builder: Daniel Jacob, Jacob Construction, Berrien Springs, Michigan; 269/471-2492; e-mail: *dtj49@starband.net*.

Throughout

Circle and half-circle windows—Andersen; 800/426-4261; *andersenwindows.com*. All other windows Architect Series—Pella Corp.; 888/847-3552; *pella.com*.

Pages 34–35, 36, 42, 44

Stone wall, pavers—Cuddlebacks Landscaping and Maintenance, Inc., Rolling Prairie, Indiana; 219/778-4452. Fencing—Jacob Construction, Berrien Springs, Michigan; 269/471-2492; e-mail: *dtj49@starband.net*. Arbor—Walpole Woodworkers; 800/343-6948; *walpolewoodworkers.com*. Bell at screen porch—Brosamer's Bells, Brooklyn, Michigan; 517/592-9030; *brosamersbells.com*. Brackets at roof—Auer-Jordan, Healdsburg, California; 707/838-1918; *auerjordan.com*. Corrugated siding—Midway Engineering, Dowagiac, Michigan; 269/782-8614. Standing rib roofing Image II Roofing System by Metal Sales Manufacturing—through Schultz Roofing Supply, St. Joseph, Michigan; 800/982-4618; *schultzroofing.com*. Wood clapboard siding and shingles—Cedar Shingles Direct; 800/641-9663; *michiganprestain.com*. Cupola—New Concept Louvers, Springville, Utah; 801/489-0614; *newconceptlouvers.com*. Weather vane—Green Mountain Enterprises, Hotchkiss, Colorado; 970/433-6944; *greenmountainenterprises.com*. Sconces Onion Lamp—Sandwich Lantern Works, Sandwich, Massachusetts; 888/741-

0714; *sandwichlantern.com*. Gutters, downspouts—Classic Gutter Systems, LLC, Kalamazoo, Michigan; 269/665-2700; *classicgutters.com*. Snow guards—Snoblox-Snojax.com; 800/766-5291; *snoblox-snojax.com*.

Page 37

Entry door Dutch door—YesterYear's Vintage Doors, Hammond, New York; 800/787-2001; *vintagedoors.com*.

Handblown bull's-eye glass in door—Sugar Hollow Glass, New Fairfield, Connecticut; 203/746-0456; *sugarhollowglass.com*. Door hardware—Acorn Manufacturing; 800/835-0121; *acornmfg.com*. Light fixtures Grande Diego—Circa Lighting; 877/762-2323; *circalighting.com*.

Pages 38–39

Cabinetry custom—James R. Clum, Inc., Grand Rapids, Michigan; 616/443-0499. Custom glazing on cabinets—Howard Parker Painting and Papering, Kalamazoo, Michigan; 248/560-5359. Countertop carrara marble—Pro Shop Building Products, Berrien Springs, Michigan; 269/473-3770; *proshopstore.com*. Island countertop salvaged wood—New Energy Works Timberframers, Farmington, New York; 800/486-0661; *newenergyworks.com*. Antique bin pulls—Urban Remains, Chicago; 312/492-6254; *urbanremainschicago.com*. Cabinet knobs—Charleston Hardware Co.; 866/958-8626; *charlestonhardware.com*. Antique berry-picking bucket—Marco Polo Antiques, Harbert, Michigan; 269/469-6272. Sinks from the Shaws Original collection—Rohl; 800/777-9762; *rohlbome.com*. Faucets—Kohler Co.; 800/456-4537; *kobler.com*. Range—Aga Ranges, Inc.; 866/424-2487; *aga-ranges.com*. Dishwasher—Fisher & Paykel Appliances, Inc.; 888/936-7872; *usa.fisherpaykel.com*. Refrigerator from the Architect series II with French door bottom freezer—KitchenAid; *kitchenaid.com*. Chandeliers Brocante by José Esteves—Interieurs, New York City; 212/343-0800; *interieurs.com*. Glass sconces—Pottery Barn; 800/922-5507; *potterybarn.com* (product line varies). Barstools—Sundance Catalog Co.; 800/422-2770; *sundancecatalog.com*.