

SHOP NOW

HABITUALLY CHIC®


GLAMOROUS LIVES & STYLISH PLACES

ABOUT

ARCHIVES

SHOP













Kips Bay Decorator Show House

2018: Philip Mitchell Design

by *habituallychic*

04 . 27 . 18

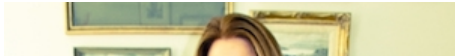


It was at the 2015 Kips Bay Decorator Show House that I first met interior designer Philip Mitchell and his partner Mark Narsansky when I fell in love with Philip’s [Stairway to Heaven](#). We’ve become such dear friends that we were joking earlier this week that it feels like we’ve known each other forever and I couldn’t be more proud of Philip’s Drawing Room for the 2018 Kips Bay Decorator Show House. I started off my coverage in 2015 with Philip so of course I had to begin this year’s coverage with him too.

I saw the room at the pre-renovation party and it had some awkward elements and prominent vents that have been seamlessly incorporated into the room with the help of Silverlining Inc. (General Contracting +



Habitually Chic Founder Heather Clawson



Construction Management) and Balmer Architectural Mouldings Inc. The decoration has created a warm and inviting space that makes you want to sit and stay awhile. Philip was kind enough to share his inspiration for the room with me.

"The Drawing Room is inspired by the history of family and the love of collections. I grew up split between a traditional family home in the Canadian countryside and the urban contemporary sprawl of Los Angeles. In either reality, I was surrounded by luxurious details; antiques, custom upholstery, window coverings and cushions in fabrics that were rare or hand-woven artistry and even lampshades that were bespoke. My mother made each space about comfort first; personal touches, classic pieces mixed with some whimsy – her character and how she loved to live clearly showed through our homes. The Drawing Room is curated diversity within a space. It's a place I see my mother and other fascinating personalities mingling, sipping cocktails, discussing art and life and everything in between.

Architectural detailing is essential to my design process, as it provides a context and a canvas on which I begin to layer with colour and texture. Wall coverings, carpets, window treatments and upholstery are all extensively researched and often are bespoke pieces of artistry unto themselves. These hand-treated commissions make the design even more meaningful. I focus on curating timelessness and I do this in The Drawing Room by selecting pieces from different design periods, diversifying materials, layering styles and building a story for the room to tell.

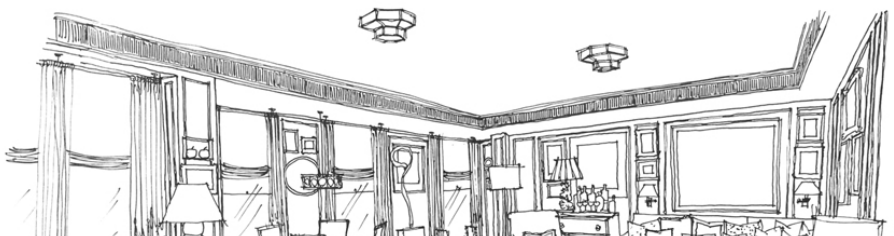
Art selection and placement is integral to my process as well as the story the room tells about the people it serves, which is why we have included collections in The Drawing Room. People love certain things and get attached to them from when we're children right up to adults. We start collecting things for passion and souvenir and as I do this myself, I wanted to fill the room with these things of beauty which personalize the space and inspire a sensation of intimacy. The Drawing Room is about the nostalgia I have for all that is grand about living well with beautiful things and entertaining enchanting people."



Habitually Chic Instagram



The room pre-renovation.

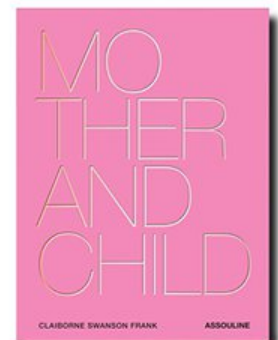


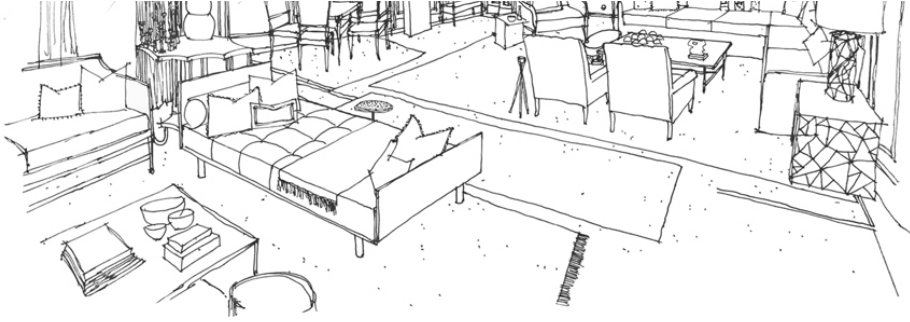
NEWSLETTER?

sign me up for daily inspiration



Mother's Day Gift Guide





Philip's sketch for the drawing room.



Philip told me that none of the pillows match but they all manage to look great together. Fabric are from Kravet, Lee Jofa, Brunschwig & Fils, Bennison, Chelsea Textiles, Cowtan & Tout, and Primavera Interior Furnishings, with trims from Samuel & Sons and fabrication by Artemisia Inc.

The Fold Spring Collection



Aerin for Williams-Sonoma Home

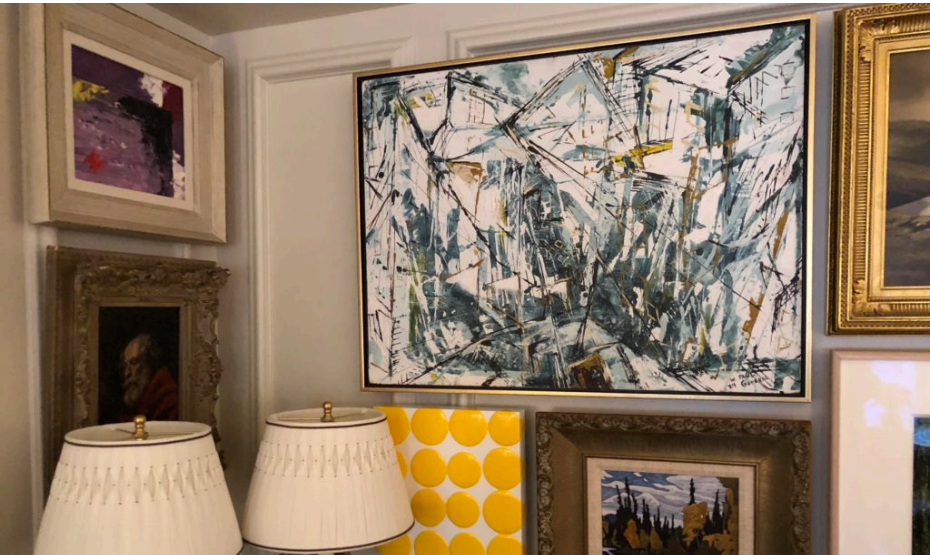


Spring Outfit





The room is filled with collections of objects and art.



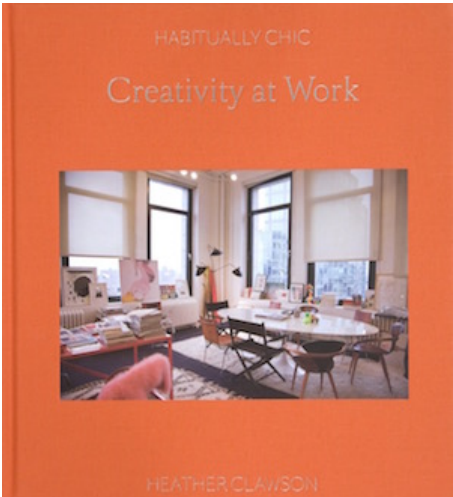
My Skincare Routine



What I've Bought for Spring



Habitually Chic: Creativity at Work





The artwork was hung by installed by llevel, the best in the business.

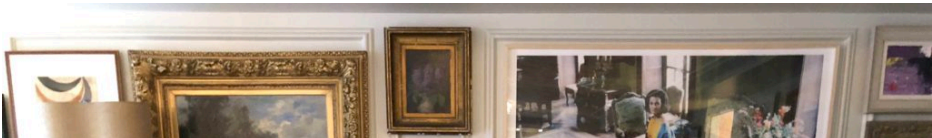


Tulips II by Nancy Richardson is from Voltz Clarke Gallery



Habitually Chic Sponsors







Lee Radziwill, blue cape in brocade room by Mark Shaw is from Liz O'Brien Gallery





Philip Mitchell and Wylo, one of his two Ganaraskans. (Also, do you have any idea how hard it is to take a photo where the person and dog are both smiling?!)

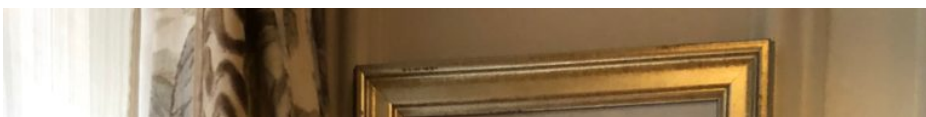




Philip and Mark always have arrangements from Plaza Flowers.



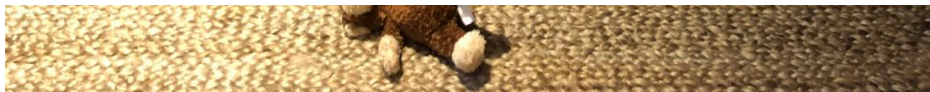
The Gucci pillow is to die for and such a fun touch.





The portraits of Jacob and Wylo are by Beth Rundquist.





Jacob and Wylo are Ganaraskans from Canada.



Custom dog bed pillows are by Deborah Sharp Linens.





Neue kammern enfilade i & ii on left wall by Celia Rogge from Celia Rogge Fine Arts.

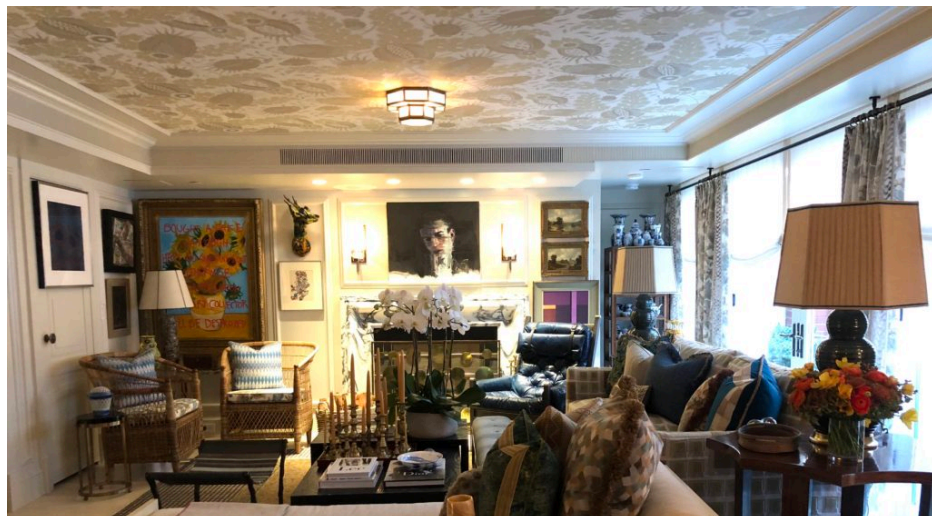


Custom window coverings from Kingswood Drapery with fabric from Lee Jofa/Brunschwig & Fils.





The chairs are vintage Hollywood Regency from Philip's personal collection. He should have those created for his own furniture line because they are fabulous.



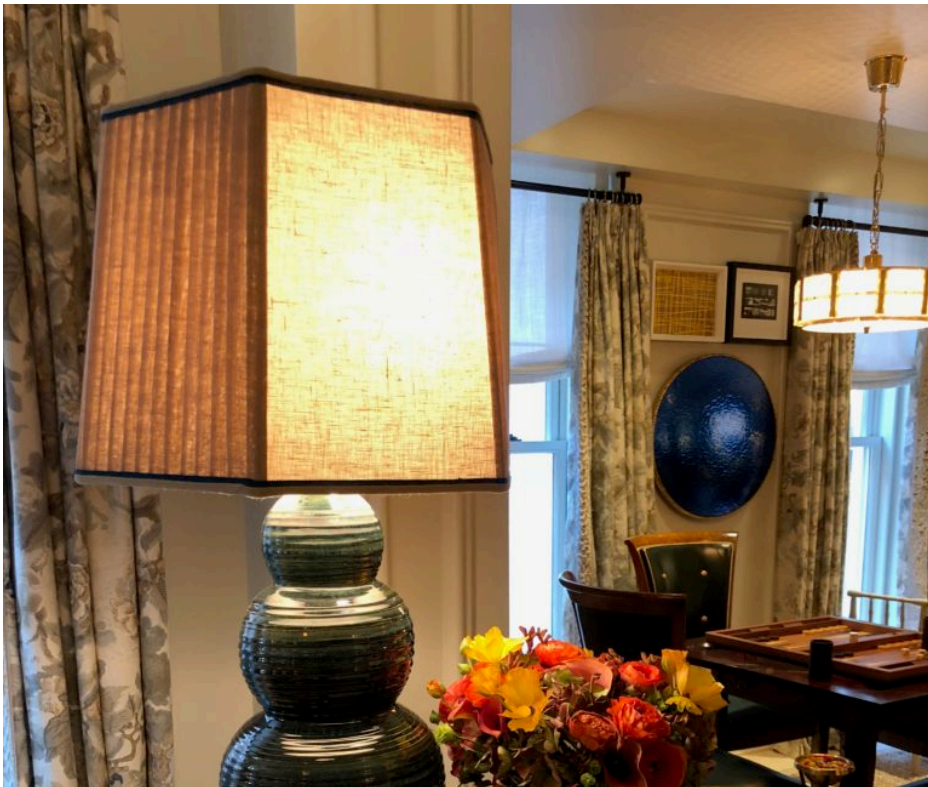


Ceiling wallcovering is Carnival from Christopher Farr.



Philip layered rugs from Brunswick & Fils, The Rug Company, Persian Bayat, and Shiir Rugs.

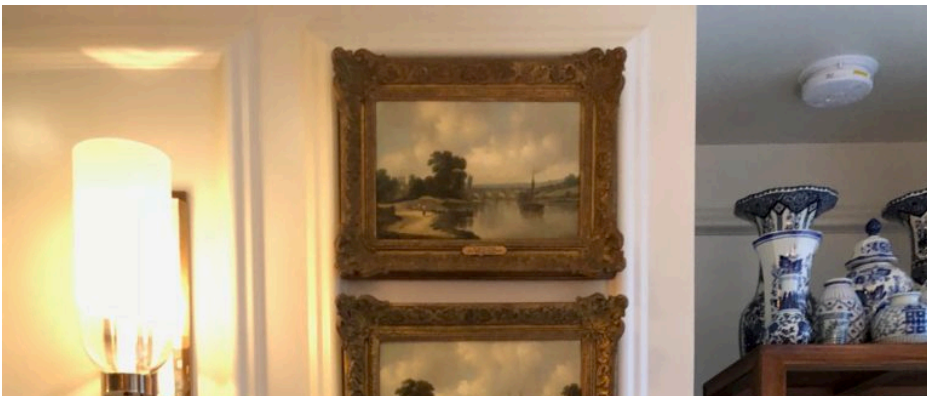








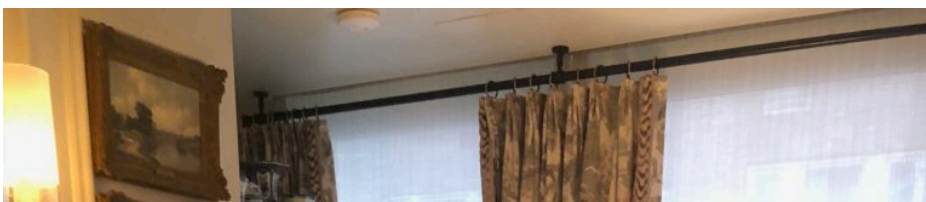
Philip changed out the mantle with a Hand Carved Botero Arabescato Mantel from Chesneys. The Lex flushmount light fixtures are from The Urban Electric Co.







The collection of blue and white porcelain belonged to Philip's mother who would have loved this room.









Wylo and Jacob again. They're looking at Mark standing behind me with treats.





Fake Van Gogh painting by CB Hoya.





Photos by Heather Clawson for Habitually Chic.



TWEET THIS



SHARE THIS

► TAGS

Art, Collections, Interior Design, Kips Bay, Kips Bay Decorator Show House, Kips Bay Decorator Show House 2018, Philip Mitchell Design

RELATED STORIES



Alexa Hampton's Olympia Folly

[VIEW POST](#) ▶



Color Me Happy Staircase by
Sasha Bikoff

[VIEW POST](#) ▶



Housing Works Design on a
Dime 2018

[VIEW POST](#) ▶

[ABOUT](#) | [PRIVACY POLICY](#) | [TERMS & CONDITIONS](#) | [ARCHIVES](#) | [RSS](#)

© 2006 - 2018 HABITUALLY CHIC®